

19th April 2024

Weekly Newsletter



Dear parents and carers,

I find it hard to believe that we have begun the Summer term and we are already in the final term of the school year. The weather certainly doesn't feel like it either so let's hope that we start to see the warmth of the sun soon.

Despite the weather we have managed to spend some learning time outside and many playtimes have been enjoyed on the school field.

It has been a very positive first week back at school and I have been thrilled to receive so many children into my office to share their good work. This week I have seen some particularly high quality writing examples, well done to all who have shared their work and received a gold Headteacher's sticker.

Best wishes,

A handwritten signature in blue ink, appearing to read 'S. Boyle', is written over a light blue circular stamp.

Mrs S Boyle
Headteacher

Reception Classes – Acorn and Chestnut

Reception teachers were excited to get back to school this week and see the children return happily to school. They have continued their phonics learning and are practising reading with more fluency. The children have enjoyed their new topic about Animals. They started this week by looking at farm animals. It was exciting to hear what the children already know about farms and all the adventures the children have had previously visiting farms with their friends and families.

In PE they enjoyed a Cosmic Yoga together in the hall. The children followed the moves well and enjoyed becoming different farm animals with their bodies.

They will be looking at different types of animals over this half term, please feel free to bring any animal books (named) - both fiction and non-fiction that can be shared in class together.

Silsoe VC Lower School, Chestnut Avenue, Silsoe, Bedford MK45 4GP

www.silsoeschool.co.uk

01525 860 247

Year 1 – Hawthorn and Willow

In English, they have started to look at 'Stories in Fantasy Settings'. They have read the story 'Aliens Love Underpants' and will be designing and describing our own alien as well as looking at the order of the story.

In Maths, they are beginning to learn about multiplication. They are looking at the 2, 5 and 10 times table and finding the patterns in numbers.

In RE, Year 1 are learning about Islam and how Muslims celebrate their God, Allah.

In Science this week, they have looked around the area for signs of Spring and talked about what happens when the weather starts to get warmer and drier (hopefully!)

Please can the children bring in either a cereal box or shoe box by the 26th April.

Year 2 – Maple and Sycamore

This week Year 2 have finished learning about The Great fire of London and produced great pictures as well as thoughtful writing.

They have started our new topic in RE about how we can show care for our world and what we can do to make a difference. Today they have started their new maths topic learning about fractions.

Year 3 – Palm and Pine

This week in English the children have delved into the art of persuasive writing, exploring the different features of different types of persuasive texts. During the lessons the children have uncovered the power of language to sway opinions and inspire action. They have been learning persuasive techniques such as rhetorical questions, emotive language, and powerful imagery. The children have also explored a variety of persuasive texts, from advertisements to speeches, and are excited to channel their learning into a persuasive piece of writing at the end of the unit.

Year 4 – Elm and Oak

This week the update is written by Ella in Year 4

In English this week Year 4 were learning about Haiku poems. A Haiku poem is a 3 lined poem that has 5 syllables on the first line 7 syllables on the second line and 5 on the third line.

Year 4 also went to a multisport festival at Arnold academy this week. They took part in 6 activities including rugby, golf and cricket.

The first activity was rugby and someone held a rugby ball and if you got tagged you would then get the rugby ball.

The second activity was golf and they had to try to hit a cone.

The final activity was cricket and you had to knock the stumps to get the person out. This was my favourite activity of the day.

Conifer class

The children have continued to access their personalised curriculum in English and Maths whilst building and strengthening relationships with their peers and adults. Some of the children continue to access some mainstream lessons in the afternoons.

In our Hamish and Milo sessions, we continue to think more deeply about friendship and what 'friendship' means. We made a magic friendship jar where the children chose the 3 most important 'ingredients' (kindness, fun, good listener, loyal, trust etc).

Some children have started to learn about body parts in our science lessons. Other children have continued to access many of their lessons with their mainstream class.

Attendance for this week

Acorn	99.4%	Chestnut	100%
Hawthorn	92%	Willow	100%
Maple	95.5%	Sycamore	98.7%
Palm	98.9%	Pine	96.7%
Elm	94.4%	Oak	96.8%
Conifer	100%		

Please find the link to the NHS website regarding 'Is my child well enough to be in school'
<https://www.nhs.uk/live-well/is-my-child-too-ill-for-school/>

If your child has a temperature for more than 2 days please take them to the doctor to get them checked for an infection.

Being late for school can affect your child's attendance, anyone arriving after 8.55 and entering through the front doors will be marked as late and anyone arriving after 9.15 will be marked as an unauthorised absence which will affect their attendance (unless there is an acceptable explanation).

Star and Leaves awards

We are proud of the hard work the children make with their academic work, their resilience and positive attitude to learning in addition to the efforts they make to follow our school values. Each week in our celebration assembly we congratulate children who have gone above and beyond and have demonstrated a positive attitude to learning and thus achieved the Behaviour for Learning Star. We are also very proud of the children who demonstrate our school values to a high standard and are awarded the Values Leaf. All children who are recognised for their hard work in our celebration assembly will enjoy a hot chocolate with Mrs Boyle, our Headteacher.

This week we are celebrating:

Class	Stars	Leaves
Acorn	Renee	Harry
Chestnut	Noah	Ayrton
Hawthorn	Lucie	Ndinga
Willow	Reilly	Isla
Maple	Micah	Elizabeth
Sycamore	Leo	Jack



Palm	Leo	Jacob
Pine	Leo	Lucy
Elm	Theo	Freddie C
Oak	Harrison	Scarlett
Conifer	Edward	

General Information

We Will Rock You

Congratulations to Ella in Year 4 who has taken to the stage again over the holidays to perform in We will rock you at Bedford Corn Exchange. We have heard from a number of children who were able to watch you perform and said how well you did.

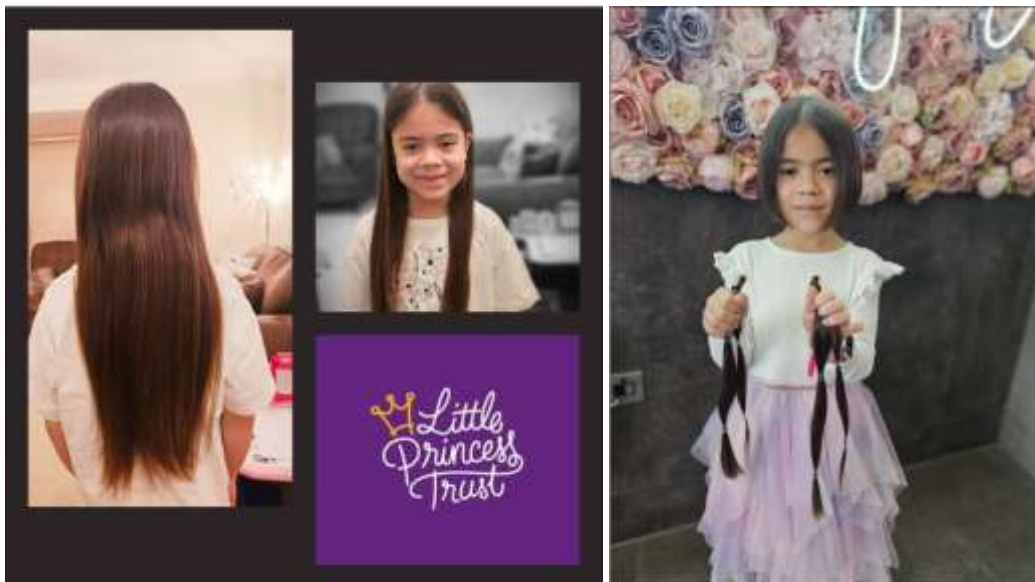
We are very proud of you.



Little Princess Trust

About 6 weeks ago Chloe said she wanted to get her hair cut and send her hair to a charity to be made into a wig for young people who are dealing with the effects of cancer. So, we contacted The Little Princess Trust to organise this and set up a just giving page where she has raised a whopping £1,010 for this amazing cause.

Here are Chloe's before and after pictures. Well done Chloe we are really proud of you.



School Vision

We have just started the process of rewriting our school vision and mission statement. The school vision aims to encapsulate the spirit and ethos of our school and is an integral part of our school

Silsoe VC Lower School, Chestnut Avenue, Silsoe, Bedford MK45 4GP

www.silsoeschool.co.uk

01525 860 247

identity and our daily activities. We would like to update how our vision is written in order to reflect the changes within our school community and to make it more accessible and 'child friendly.' The updated vision will be accompanied by a Bible verse which will be chosen to enhance and reflect our vision and will underpin the values of our school.

We are now beginning to gather together the views of children, staff, parents and governors so that we can create a vision which captures the nature and ethos of our school for everybody who is part of our school community. We would like as many of you as possible to complete the linked questionnaire so that we can truly represent what is most important to our school now and over the coming years. Please complete the anonymised questions and submit to us by 26th April. This will enable us to begin to formulate our new vision ready for launch in September.

If you have any questions or would like to discuss this further then please make an appointment to chat to Mrs Ambler via the school office. We look forward to receiving your input as we work together to create our new vision.

<https://forms.gle/HZDdqfz8Uh1irHJw5>

Message from the PTA

Welcome back and we hope you all had a lovely Easter break.

Just a quick reminder on some key PTA dates.

Wednesday 24th April - Bag2School collection. Please drop any bags to school before 9am on that morning.

(Please do not drop any bags before 24th)

Thursday 25th April - PTA Spring Disco

Have you booked your child's ticket yet? If not please follow the link below:

<https://forms.gle/pnkcVN5Pnybrca1K9>

If you would like to volunteer to help out at the disco on either session then please sign up using the link below:

<https://volunteersignup.org/LTRJW>

Saturday 18th May - PTA Quiz Night (adults only)

Booking closes on 20th April

This is always a fun filled evening to battle against other teams to see who can win.

There will be a bar and snacks available and a prize for the winning team.

Maximum team number is 8 people.

Please book using the link below:

<https://forms.gle/oKuZxX4ajt1JXSJA7>

Silsoe PTA Team

Before and After school clubs run by outside companies

Please see details of clubs running before and after school by outside companies, please note the change of day for the Gymnastics club

Monday morning Performing Arts Collective Years 1 - 2 [Performing arts collective Year 1-2](#)

Tuesday PM Premier Education Dodgeball Years Reception – Year 2 [Premier-education](#)

Tuesday PM Choir This is already full.

Wednesday AM Premier Education Gymnastics club Years 1-4 [Premier-education](#)

Wednesday PM Jam Coding Years 1-4 [Jamcoding](#) (No longer taking bookings)

Thursday PM Performing Arts Collective Years 3 – 4 [Performing arts collective Year 3-4](#)

Friday PM Tennis Club Years 2-4 Sign up via SCOpay.(No session Friday 26th April)

Diary Dates

Please find below dates for the rest of this school year. Please note dates which have changed or added have been highlighted.

24/04/2024	8am	Bags2school collection for PTA
25/04/2024	All Day	Y4 Bikeability – children to bring in bikes & cycle helmets
25/04/2024	4-5pm and 5.30-6pm	PTA Disco Buy tickets by clicking this link
03/05/2024	10-2pm	Year 4 Kwick Cricket (Invited children only)
13/05/2024	All Day	Y4 Grafham Water Trip
14/05/2024	All Day	Y4 Grafham Water Trip
15/05/2024	All Day	Y4 Grafham Water Trip
16/05/2024	3.30pm to 4.30pm	Scholastic Book Fair YR, Y1 and Y2
17/05/2024	3.30pm to 4.30pm	Scholastic Book Fair Y3 and Y4
18/05/2024	7pm	PTA Quiz Night Book your table by clicking this link
22/05/2024	All Day	Reception trip to Standalone Farm
07/06/2024	All Day	Y2 Herrings Green trip
08/06/2024	All Day	Silsoe Lower School Football Tournament
12/06/2024	Morning	School Photographer – Class Portraits
24/06/2024	9.15am	Y4 Moving up assembly/workshop
26/06/2024	3.45pm to 5.45pm	Book look & meet your new Teacher for 2024 to 2025
27/06/2024	All Day	Transition Day
28/06/2023	All Day	Y1 Mount Fitchett Trip
01/07/2024	All Week	Sports Week – details to follow nearer the time
04/07/2024	PM details sent to parents	Singing Superstars concert – Details to be confirmed
05/07/2024	TBC	Y4 Leaf Walk in Silsoe
08/07/2024	All Week	Back up Sports Week (for events cancelled during w/c 01/07/2024 due to adverse weather conditions)

Silsoe VC Lower School, Chestnut Avenue, Silsoe, Bedford MK45 4GP

www.silsoeschool.co.uk

01525 860 247

10/07/2024	TBC	Y4 Visit to Silsoe Parks
19/07/2024	9.30am	Y4 Leavers Assembly

OUR CURRENT VALUE IS:

Patience

'But if we hope for what we do not see, we wait for it with patience.'

Romans 8:25

SILSOE PTA

SPRING DISCO

Thursday 25th April

4-5pm Reception & Year 1

5:30-6:30pm Year 2, Year 3 & Year 4

Enter through main reception, pick up from playground doors.

Please take coats home with you.

[Buy tickets by clicking this link](#)



Silsoe VC Lower School, Chestnut Avenue, Silsoe, Bedford MK45 4GP

www.silsoeschool.co.uk

01525 860 247



Flitwick and Mid Beds Locality Children's Centre

Malham Close, Flitwick, MK45 1PU

APRIL-JULY 2024

0300 300 8111

Flitwick.childrencentre@centralbedfordshire.gov.uk



Support & Advice

The Centre staff can offer support and advice on breast feeding, parenting, choosing childcare, FREE 2-year funded pre-school places, introducing solid food, toilet training, oral health, training/education, home safety, plus much more. Please ask a member of the team or contact us by phone or email.

Rebuild

The Rebuild Programme is a 12-week group programme looking at healthy relationships. It's designed for women living with domestic abuse in Central Bedfordshire, and will explore what healthy relationships look like, conflict in relationships, the dynamics of domestic abuse and the impact it has on relationships. It will also give women the opportunity to have a one-to-one with the programme facilitator towards the end of the programme and plan for their future. For more information, please contact our facilitators - jane.williams@centralbedfordshire.gov.uk, janice.foley@centralbedfordshire.gov.uk, justine.o'driscoll@centralbedfordshire.gov.uk



Worried about your child's talking, listening, interaction or stammering?

NB: This service is for children pre-school age and younger who are NOT already known to or haven't been referred to the Speech and Language Therapy Service and live within Central Bedfordshire.

During these short 15-minute phone or video consultation we will discuss your concerns and provide advice and strategies to try. Face to face appointments can be offered following this consultation if needed

To book complete the online form at

<https://childspeechbedfordshire.nhs.uk/how-to-refer/early-advice-sessions/>

YOU CAN NOW REGISTER WITH US ONLINE JUST SCAN THE QR CODE



Follow us Flitwick and District Children's Centre



FOR MORE INFORMATION ON OUR SERVICES Please Scan the Central Bedfordshire Council Family Information Directory



Bedfordshire & Luton Children's Community Health Hub 0-19 years - YOUR ONE STOP CONTACT POINT TEL 0300 555 0606

EMAIL ccs.bedsandlutonchildrenshealthhub@nhs.net OPENS 9AM TO 5PM MONDAY TO FRIDAY (excl bank hol)

We really appreciate your feedback - please spare a moment and visit https://centralbedfordshire.welcomesyourfeedback.net/childrens_support to voice your opinions

Programme April-July 2024

Flitwick Children's Centre, Malham Close, Flitwick, MK45 1PU

Mondays	Tuesdays	Wednesdays
Weighing Clinic 8.45am-9pm Weekly @ Flitwick CC BOOKING REQUIRED Appointment only for weighing babies.	Cranfield Drop In and Play 9.30am-11am Weekly (from time only) @ Cranfield C of E Academy (St Paul Site), Brasburn Way, Cranfield, MK43 0EH DROP IN SESSION A drop-in session for children and their families to explore, play, learn and have fun together. Friendly, experienced staff from Flitwick Children's Centre available throughout the session to support and offer advice around topics. Self-weighing facilities also available.	ChatterTots 9am-10am 8 Week Course Starting 24.04.24 @ Flitwick CC BOOKING REQUIRED Do you want ideas to help your child's talking and listening? ChatterTots is a 4-week course run by our Speech and Language Champion and will give you lots of ideas and tips for supporting your child with their speech and language development. Suitable for all children aged 18 months to 3 years.
Breastfeeding Braverie 1.30pm-3pm Weekly @ Flitwick CC DROP IN SESSION Come and meet other breastfeeding mums - for exclusive, mixed feeding or even if you are expressing! Friendly breastfeeding information and support group with trained staff. Tea and coffee available. Just come along and drop in!	Young Parents Group 1.30pm-2.45pm Weekly @ Flitwick CC DROP IN SESSION For parents under 25 years old. Play, meet other young parents and improve your wellbeing	Bumpstart 10.30am-12pm Weekly @ Flitwick CC DROP IN SESSION Make new friends with other parents and parents to be. We welcome all expectant and new parents, with refreshments, chat and toys. For pregnant families and families with babies aged up to 6 months old.
Sensory Stay and Play 10am-11am Every second Monday of the month @ Flitwick CC DROP IN SESSION A sensory session for families with children with Profound and Multiple Learning Disabilities. Come and meet other families and enjoy a relaxing session of lights, calming music, and sensory toys.	Bumps, Births and Baby Stuff Antenatal Classes 9.15am-9.30pm 09.04.2024 @ Flitwick CC 14.05.2024 @ Flitwick CC 09.07.2024 @ Flitwick CC BOOKING REQUIRED VIA EVENTBRITE - https://www.eventbrite.co.uk/1/antbed-classes-flitwick-tampa-jerth-and-baby-1st/ Antenatal class for mums-to-be from 30 weeks pregnant. Partners welcome. Come and find out about labour, feeding, caring for your baby and preparing for family life.	Communication Tots 9am-10am 8 Week Course Starting 05.06.24 @ Flitwick CC BOOKING REQUIRED Have you noticed that your child may have emerging additional needs alongside speech and language difficulties? Communication Tots is a 4-week course run by our Early Years SEND Advisory Teacher and Family Worker and will give you lots of advice and support for supporting your child's development. Suitable for children aged 18 months to 3 years.
Introducing Solids Workshop 10am-11am 24.05.2024 @ Flitwick CC BOOKING REQUIRED This workshop will provide you with lots of tips, advice and information on introducing solids to your little one!	Parent Puzzle 1pm-3pm 10 Week Course Starting 13.05.2024 @ Marston Moretaine Community Centre, Great Lakes, Marston Moretaine, MK45 0DD BOOKING REQUIRED The Parenting Puzzle workshops help to build strategies to reduce the stress of parenting and prepare your children for school. It's also a great place to meet other parents and carers in your area. For parents with children aged 2-5 years. Creche facility available.	Baby Massage Starting at 3.30pm 4 Week Course Starting 01.05.2024 @ Flitwick CC BOOKING REQUIRED Suitable for babies from 6-8 weeks and up to pre-crawling. Please note there is a small charge of £20 for this course. (Cash only please, this is non-refundable and needs to be paid prior to attending the course to secure your space.)
Baby Sign Starting at 3.30pm 3 Week Course Starting 08.04.2024 @ Flitwick CC BOOKING REQUIRED Baby Sign is a free, informal 3-week course for parents of children aged 0-12 months old, covering different signs each week, the benefits of Baby Sign, singing and much more!	Songs and Smiles Starting at 2pm 14.04.2024, 21.05.2024, 18.06.2024, 16.07.2024 @ Female Residential Home, Easton Rd, Flitwick MK45 1HB BOOKING REQUIRED An intergenerational music group for 0-3-year-olds, their grown-ups and older people, held in Female Residential Home. We sing, move, play, make friends and have lots of fun!	Intbetweens 1.30pm-3pm Weekly @ Flitwick CC DROP IN SESSION Intbetweens group is for children in the early stages of moving. It is great for crawlers, toddlers, and shufflers! Come and meet other families with babies aged 6-12 months. Build friendships, and engage in friendly conversation.
	<div style="border: 1px solid black; border-radius: 50%; padding: 10px; text-align: center;"> <p>To book onto any of our sessions or for further info, please contact the Children's Centre on 0300 300 8111 or on flitwick.childrencentre@centralbedfordshire.gov.uk</p> </div>	Introducing Solids Workshop 9am-10am 22.05.2024, 17.07.2024 @ Flitwick CC BOOKING REQUIRED This workshop will provide you with lots of tips, advice and information on introducing solids to your little one!



Thursdays	Saturdays
<p>Baby Sign Starting at 9pm 3 Week Course Starting 06.06.2024 @ Flitwick CC BOOKING REQUIRED</p> <p>Baby Sign is a free, informal 3-week course for parents of children aged 0-12 months old, covering different signs each week, the benefits of Baby Sign, singing and much more!</p>	<p>Male Carers' Club 9.30am-11am 3rd Saturday of the Month @ Flitwick CC DROP IN SESSION</p> <p>A snack is provided! Dads, Grandads, Uncles, all are welcome! Please note that activities are suitable for under 8s.</p>
<p>Marston Moretaine Drop In and Play 8.30am-10.30am Weekly (term time only) @ Marston Moretaine Community Centre, Great Ovens, Marston Moretaine, MK43 0DD DROP IN SESSION</p> <p>A drop-in session for children and their families to explore, play, learn and have fun together. Friendly, experienced staff from Flitwick Children's Centre available throughout the session to support and offer advice around topics. Self-weighing facilities also available.</p>	<p>New Life Skills - Introduction to First Aid 9am-12am 18.05.2024 @ Flitwick CC 13.07.2024 @ Flitwick CC BOOKING REQUIRED</p> <p>This is a basic first aid course for parents or carers of babies and young children. It covers all of the essentials like CPR and dealing with a choking casualty. There is a small charge of £10 per adult for this course. Unfortunately, no children can attend. <i>(Cash only please, this is non-refundable and must be paid prior to attending the course to secure your space.)</i></p>
<p>Stay and Play in Our Own Way 1.30pm-2.30pm Weekly @ Flitwick CC DROP IN SESSION</p> <p>These sessions are FREE and only for children with SEND, however, you do not need to have a formal diagnosis to come along. Safe, enclosed space. Chat to other parents of children with SEND. No pressure to join in.</p>	<div data-bbox="981 548 1428 884" data-label="Text"> <p>To book onto any of our sessions or for further info, please contact the Children's Centre on 0300 300 8111 or on flitwick.childrencentre@centralbedfordshire.gov.uk</p> </div> <div data-bbox="885 884 1061 1041" data-label="Image"> </div> <div data-bbox="1316 896 1444 1019" data-label="Image"> </div>
<p>Baby Days 1pm-3pm 6 Week Course Starting 25.04.2024 @ Flitwick Leisure Centre, Steppingley Road, Flitwick, MK45 1TH BOOKING REQUIRED</p> <p>Baby Days is a FREE, informal course for parents of babies aged 0-4 months covering sleep, feeding, brain development and much more! It's also a great opportunity to meet other parents with babies of a similar age!</p>	
<p>Keeping Your Child in Mind 1pm-3pm 8 Week Course Starting 27.03.2024 @ Flitwick Leisure Centre, Steppingley Road, Flitwick, MK45 1TH BOOKING REQUIRED</p> <p>The Keeping the Child in Mind programme helps parents/carers to work together in ways which support growing children and a calmer family life. This programme helps us think about what we do, why we do it and how it makes us all feel in the family. Partners are welcome and it's also fine to come on your own or with another relative or friend. No creche facility available.</p>	

Welcome to Flitwick and District Children's Centre.



Please scan this QR code to complete our Access to Services Request Form or follow this link -

<https://www.centralbedfordshire.gov.uk/xfp/form/479>

0300 300 8111



Bedfordshire Fire & Rescue Service

 bedsfire.gov.uk
 Southfields Road
Kempston, Bedford
MK42 7NR
 bedsfirealert.co.uk
   @bedsfire

Water Safety

Dear Parents and Guardians

As we are approaching the summer months following a particularly wet winter, I would like to provide some information and support in relation to water safety. Bedfordshire Fire & Rescue Service along with our partners including the Police and Local Authorities are regularly contacted by residents who are concerned for the safety of young people who are accessing water sites for leisure activities.

Popular areas for leisure activities include but not limited to;

Priory Marina – Bedford
Wixams Lakes – Wixams
Kempston Mill - Kempston
Blue Lagoon – Arlesey
River Ivel - Shefford
Stewartby Lake – Forest of Marston Vale
The Old Mill - Sandy
The Riddy – Sandy

Unfortunately, accidental drownings happen all too frequently and even the strongest swimmers can find themselves in difficulties. There are also concerns for young and vulnerable people who may not be aware of the danger and risks that water poses.

As well as changes in water current and weather conditions, outdoor water can contain hazards such as entrapments, weeds, rubbish, drains, broken bottles and pollution. It is also difficult to judge the depth of water; shallow water can change to deep water quickly and jumping into shallow water could result in serious injury. In addition, cold water shock can also occur when jumping into a river or lake on a hot day.

Advice on water safety can be found on our website www.bedsfire.gov.uk, in addition there is also a link to the Royal National Lifeboat Institution website which gives further advice on how to keep safe in water.

The fire service are unable to stop people swimming outside or in open water, but if you have concerns of anti-social behavior please report this to the Police non-emergency number on 101.

If someone is in trouble in the water and needs help in an emergency, please call 999.

Have a safe and enjoyable summer.

Kind Regards

Lauren McEvoy
Community Safety Officer
Bedfordshire Fire and Rescue Service

